

Exhibit A – USFWS Prairie Restoration Statement of Work

Overview:

The Minnesota Land Trust (MLT) is seeking quotes from qualified Contractors for prairie restorations on eight U.S. Fish and Wildlife (USFWS) conservation easements totaling 374.16 acres. Work will include herbicide application, some additional site prep, purchasing of seed, seeding, and follow up mowing. Site acreages and locations are as follows:

Truestedt – 61.86 acres – Section 19, Pelican Township (T.136N, R.43W) Otter Tail County

Driscoll – 4.13 acres – Section 32, Urness Township (T.128N, R.40W) Douglass County

BJ Bjorge – 60.67 acres – Section 20, Effington Township (T.131N, R.38W) Otter Tail County

Reger – 50.14 acres – Section 15, Leaf Mountain Township (T.131N, R.39W) Otter Tail County

Dead Lake – 42.39 acres – Section 35, Dead Lake Township (T.135N, R.40W) Otter Tail County

Roberts Trust – 9.63 acres– Section 31, Dead Lake Township (T.135N, R.40W) Otter Tail County

Barry – 102.60 acres– Sections 17 & 20, Aurdal Township (T.133N, R.42W) Otter Tail County

Mau – 32.66 acres– Section 24, Pomme de Terre Township (T.130N, R.42W) Grant County

Flooded Farm – 4.11 acres – Section 14, Eagle Lake Township (T.131N, R.40W), Otter Tail County

It is **HIGHLY RECOMMENDED** that contractors complete on-site visits before submitting their quotes. Quotes **MUST** be as accurate as possible due to the difficulty associated with changing our program contracts. Contractors will be held to their bid price limit unless major unforeseen circumstances develop on site. Most measurements in the plans are best estimates based on onsite surveys and mapping. Bids must include any mobilization or other related fees. “Extras” not included in the bid or in the design plan usually cannot be paid for unless major changes to the plan were made by the project manager. If all bids overrun available funding the project may be rebid or renegotiated with the lowest bidders, redesigned, canceled, or postponed until additional funding can be acquired.

Project Management:

Minnesota Land Trust (MLT) will be hiring you for this job, but the project will be managed on-the-ground by Shawn Papon (USFWS) and Braden Pohl (MLT). Contact Shawn or Braden with any questions about the scope of work and to schedule visits. Contact Braden for contracting related questions. Contact information is listed below.

Directions: See attached maps for specific site locations and planting details.

Braden Pohl – Contract Manager
Minnesota Land Trust
2356 University Ave W
Suite 240
Saint Paul, MN 55114
(651) 917-6299 Office
bpohl@mnland.org

Shawn Papon – Site Manager
US Fish and Wildlife Service
18965 County Highway 82
Fergus Falls, MN 56537
(218) 736-0641 Office
(218) 770-9581 Cell
Shawn_papon@fws.gov

General Bid Information

Date Bids Due: All bids are due to Braden Pohl by **11:59 PM on Thursday, February 8, 2024**, via email at bpohl@mnland.org. If you decline to bid on the project please call, email, or otherwise send a courtesy note to inform the Site Managers of your declination so we know not to expect your bid. Also let us know if you would like to be removed from similar bid invitations in the future.

Format for Bid: Contractor must submit a completed itemized bid sheet and seed information with the bid. An incomplete bid may be rejected. The bid sheet is included as Exhibit D. Include all mobilization, materials, or other fees as needed in your quote, extra costs will not be accepted if added later.

Bid vs. Final Cost: Bids should be complete and as accurate as possible. The Land Trust will not make payments in excess of bid amount. The Land Trust/USFWS reserves the right to cancel bid items in the event of unforeseen circumstances. Quantities in the Scope of Work are estimates. It is the Contractor's responsibility to verify all conditions related to the work. Bids should include any associated costs such as mobilization; extra costs will not be accepted without prior approval. No extras will be allowed because of the Contractor's misunderstanding as to the amount of work involved or lack of knowledge of existing conditions. Any stoppage, or re-mobilization costs will be considered incidental to bid.

The Site Manager must be contacted if unforeseen circumstances arise during the project. All changes must be approved in advance by the Site Manager.\

Bid Selection/Award: Responses will be opened and reviewed in private. The Minnesota Land Trust/ USFWS has sole discretion for contract award.

MLT/USFWS reserves the right to reject any or all Bids and reserves the right to issue a subsequent Solicitation of Bids or cancel the entire Solicitation of Bids process. MLT/USFWS reserves the right to contact any Respondent for clarification after responses are opened and/or to further negotiate with any Respondent if such clarification is deemed desirable by MLT/USFWS. MLT/USFWS reserves the right to evaluate the responses submitted, to waive any informalities and irregularities therein, to select candidates for interview, or to reject any or all submittals should it be deemed in MLT/USFWS's best interest. MLT/USFWS reserves the right to negotiate with any, all, or none of the Respondents.

Bids will be reviewed by MLT/USFWS. MLT/USFWS will consider all information provided in the proposal when making its decision and may consider relevant information from other sources. MLT/USFWS in its sole discretion will award the contract to the Responder submitting the "best" bid. Cost is an important consideration, but the lowest price bid is not necessarily the "best" bid. Criteria for determining the best bid includes but is not limited to: 1) overall cost and value, 2) equipment, schedule, and workforce, 3) previous contractor experience, and 4) seed source.

Statement of Work

Site Conditions

Trustedt – 61.86 acres – Currently soybean stubble. No extra site prep is needed. See **Herbicide Application** below for general site prep information.

- Seed mixes: **Dry-mesic** – 18.98 acres, **Mesic** – 42.88 acres.

Driscoll – 4.13 acres – Currently soybean stubble on north section and annual weeds on south section. Variety of site prep is needed.

- North section (3.43 acres): Soybean stubble. No extra site prep is needed. See **Herbicide Application** below for general site prep information.
- South section (0.7 acres): Annual weeds from former food plot. This section must be disced/tilled twice and packed to prepare seed bed. Allow the section to green up before spraying with 2 quarts/acre of glyphosate. No additional treatment is needed.
- Seed mixes: **Dry-mesic** – 3.43 acres, **Mesic** – 0.70 acres.

BJ Bjorge – 60.67 acres - Currently soybean stubble. No extra site prep is needed. See **Herbicide Application** below for general site prep information.

- Seed Mixes: **Dry-mesic** – 45.77 acres, **Mesic** – 11.45 acres, **Wet-mesic** – 3.45 acres.

Reger – 50.14 acres –Currently soybean stubble on most of the site and annual weeds on former food plot. Variety of site prep is needed.

- Former food plot (1.5 acres): Annual weeds. This section must be disced/tilled twice and packed to prepare seed bed. Allow the section to green up before spraying with 2 quarts/acre of glyphosate. No additional treatment is needed.
- The remainder of the work site (48.64 acres): Soybean stubble. No extra site prep is needed. See **Herbicide Application** below for general site prep information.
- Seed Mix: **Dry-mesic** – 50.14 acres.
- Access to the work area is from the north along landowner driveway and denoted with a purple line on the Overview map.

Dead Lake – 42.39 acres - Currently soybean stubble. No extra site prep is needed. See **Herbicide Application** below for general site prep information.

- Seed Mix: **Dry-mesic** – 6.42 acres, **Mesic** – 35.97 acres.
- The Roberts Trust easement is adjacent to the Dead Lake easement.

Roberts Trust – 9.63 acres – Currently soybean stubble. No extra site prep is needed. See **Herbicide Application** below for general site prep information.

- Seed Mix: **Mesic** – 9.63 acres.
- The Dead Lake easement is adjacent to the Roberts Trust easement.

Barry – 102.60 acres - Currently soybean stubble. No extra site prep is needed. See **Herbicide Application** below for general site prep information.

- Seed Mix: **Dry-mesic** – 68.11 acres, **Mesic** – 34.36 acres.
- Access to the north tract is from the west side of the work area along a neighboring farm field. The access is denoted with a purple line on the Overview and North Planting maps.

Mau – 32.66 acres - Currently soybean stubble. No extra site prep is needed. See **Herbicide Application** below for general site prep information.

- Seed Mix: **Dry-mesic** – 27.14 acres, **Mesic** – 5.52 acres.
- Note that 6.28 acres of seeding on this site is outside of the easement boundary and will need to be bid and billed separately. See Exhibit D: Bid Sheet and the Mau Planting Map for details.

Flooded Farm – 4.11 acres – Currently annual weeds. This section must be disced/tilled twice and packed to prepare seed bed. Allow the section to green up before spraying with 2 quarts/acre of glyphosate. No additional treatment is needed.

- Seed Mix: **Dry-mesic** – 4.11 acres

General Prairie Restoration Specifications

Seed Purchasing

Each project includes individualized seed mixes required for each site (See **Exhibit C**).

- The Contractor is responsible for acquiring native seed for the project that is of “local ecotype” origin.
 - The Contractor must include county/state of origin for each seed species to be used in each mix so that origin may be considered as part of the bid review and approval process.
 - In general, seed origin closer to the project site will be scored higher than seed from more distant sites. The first preference is typically for seed and plants that come from similar site conditions, and as close to the project site as possible.
 - **Shawn Papon will have final say on sourcing. Seed source is preferred within 200 miles of Ashby, MN.**
- Quantities shown in the seed mixes are PLS (Pure Live Seed) and the contractor must provide the quantity of seed shown in PLS.
- A preferred sample format for presenting seed mixes, rates and origin information is as displayed in Exhibit C. An Excel spreadsheet for Exhibit C will be provided on request. **Deviations and/or substitutions of species and changes in rates from the attached list must be approved by Shawn Papon in advance of bid submission.**
- Contractor may choose to submit their standard quote sheet in place of Exhibit C. If they do, the attachment must include Common Name, Scientific Name, Origin, Seeds / square ft. and total PLS of each species. Page 1 of RFQ must still be submitted with total cost.
- Please refer to Exhibit C for the seed mix specifications. There are three different seed mixes to be seeded: Dry-mesic, Mesic, and Wet-mesic.

Herbicide Application

- Contractor shall apply one round of glyphosate herbicide to the entire project site between May 1st and June 15th, 2024, as site prep prior to seeding.
- **If early seeding can be done, before weeds have germinated, the Site Manager can request to not have herbicide treatment completed.**
- Contractor is to conduct application of herbicide 7 days prior to planting.
- Herbicide application needs to be completed after weeds in the field have germinated and are between 3 – 10 inches tall.
- The herbicide application date needs to be approved by the Site Manager. This will typically be after May 15 but can vary depending on weather conditions.
- Contractor must provide glyphosate and non-ionic surfactant.
- The rate of application must be 64 ounces of glyphosate/acre and must be applied with labeled rate of non-ionic surfactant.
- Contractor may subcontract chemical application to licensed applicator.
- Must use herbicides according to label instructions.

- The Contractor's applicators must maintain current Minnesota Department of Agriculture Pesticide Applicators licenses.

Seeding Specifications

- Contractor must seed the site **prior to June 30, 2024.**
- Contractor must use a native grass drill approved by the Site Manager to plant prairie seed **no deeper than ¼ inch.**
 - A conventional native grass drill is sufficient and preferred (e.g., Truax, Great Plains, etc.; a no-till configuration drill is not required).
- **The Contractor must notify the Site Manager at least 24 hours prior to seeding** to ensure that the current site conditions allow for seeding.
- Contractor must seed all seeding zone locations with appropriate seed mixes as indicated on the attached maps and seed mix documents. Note that some fields will have multiple mixes to be seeded.
- Contractor must follow specified seeding rates.

Mowing

The Contractor's bid must include two mowing/clipping operations on the sites for the 2024 growing season.

- **The Contractor must notify and receive approval from the Site Manager at least 24 hours before mowing.**
 - **Whether the site is mowed and the extent of the mowing will be based on the weed pressure, and will be assessed and directed by the FWS Site Manager. The Site Manager may cancel the planned mowing.**
- Contractor will only be paid for this work if the FWS Site Manager directs the Contractor to complete the mowing.
- If mowing/clipping is approved, it must be conducted when average vegetative height of annual/perennial grass and broadleaf competition reaches a height of approximately 24-30 inches. Mow weeds back to a height of 12-18 inches, cutting approximately half the height of the vegetation.
- It is preferred that the Contractor use a bat-wing style, heavy duty rotary cutter or other mower that is approved by the Site Manager.

Contractor Responsibilities

- Work may begin when the site has appropriate conditions, and all fields must be seeded by **June 30th, 2024.**
- **Contractor must submit seed tags with seed invoices.**
- Contractor is responsible for furnishing all equipment, labor, herbicide, supplies, transportation, fuel, and all else necessary for job completion as described within this request.
- Equipment left on site must be secured and is the sole responsibility of the Contractor.

- Work must be conducted in a manner that will minimize rutting, disturbance, or compaction of soil or sod and the spread of noxious and invasive species.
 - Care must be taken to minimize the amount of rutting/gouging of the ground while working. Contractor will be responsible for repair of site if Site Manager determines disturbance is substantial enough to require repair (rutting/gouging greater or equal to 4” deep needs to be smoother out before project completion.
 - Equipment must arrive at the site clean and free of mud, vegetation, sticks, etc. All equipment must be free of noxious weed seeds. The Site Manager may inspect equipment before it can work on this project.
- **Contractor is responsible for contacting GopherOne (1-800-252-1166) to locate any utilities.**
 - The Contractor is responsible for any liability resulting from damage by their equipment to any utilities. If the Contractor or Gopher One identify any issues that would impact this project, the Project Manager must be informed immediately to help find a solution. The Contractor is also liable for damage to any other property, infrastructure, or personal injury on site due to accident or negligence and must carry the required insurance.
- The Contractor must maintain, at their sole expense, general or business liability insurance during the term of this contract with a minimum coverage of \$1,000,000. Insurance shall name the Land Trust as additional insured. Proof of insurance must be submitted to the Land Trust prior to commencement of work. The Contractor’s policy(ies) shall be primary insurance to any other valued and collectible insurance available to the Land Trust with respect to any claim arising out of the Contractor’s performance of this Contract.

Project Payment

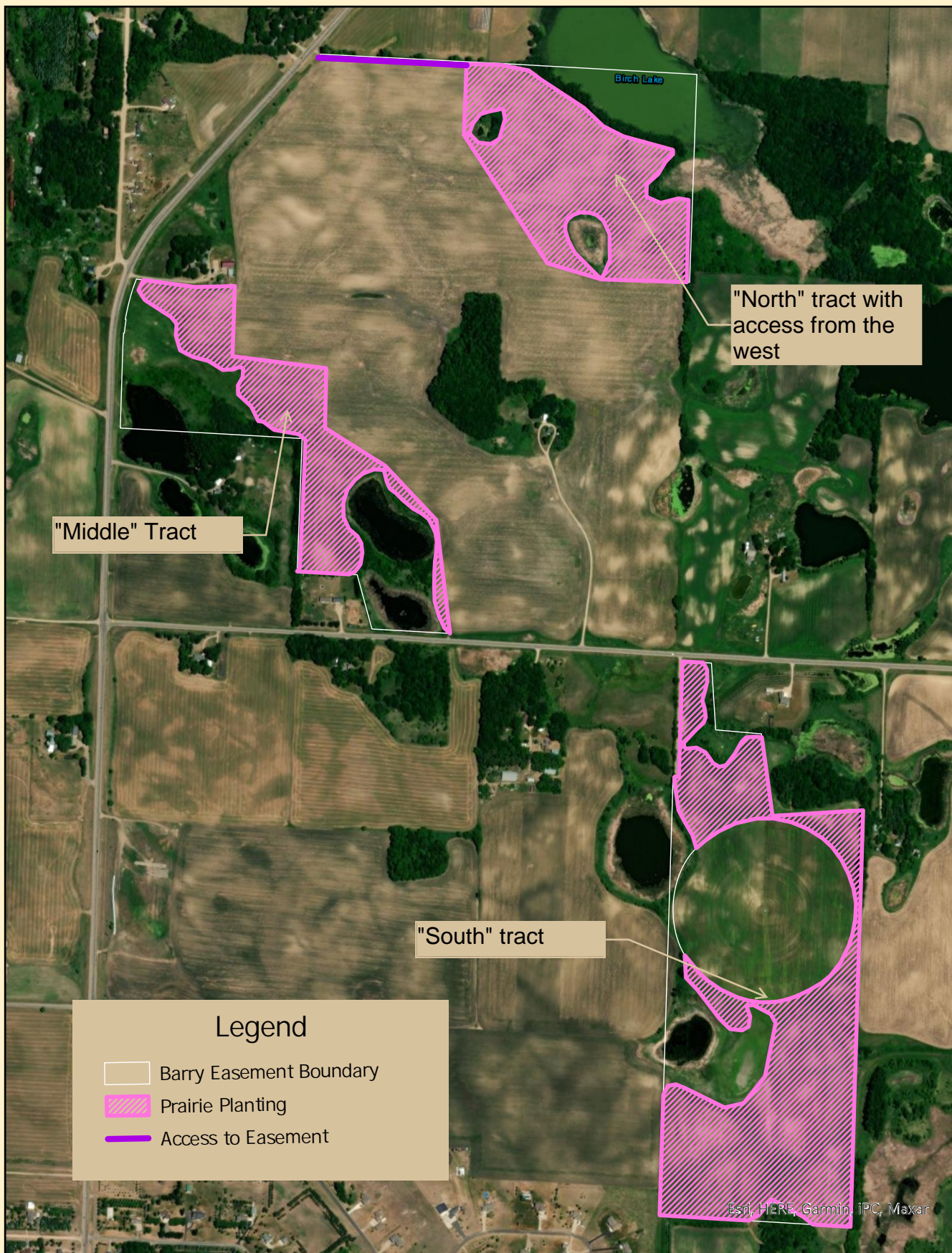
The Contractor should submit invoices for payment directly to the Minnesota Land Trust. The Minnesota Land Trust **will pay upon receipt of a complete, itemized invoice and confirmation of contract compliance.** The Land Trust will reimburse the Contractor according to the Cost schedule included in this Scope of Work. Two invoices for this project may be submitted. The first can be submitted for the seed, herbicide application, site prep, and seeding, once work is completed and inspected. A second invoice may be submitted when the mowing/clipping(s) are completed and inspected. Seed tags must be completed and delivered to the Site Manager coincident with the seed invoice.

Quotes

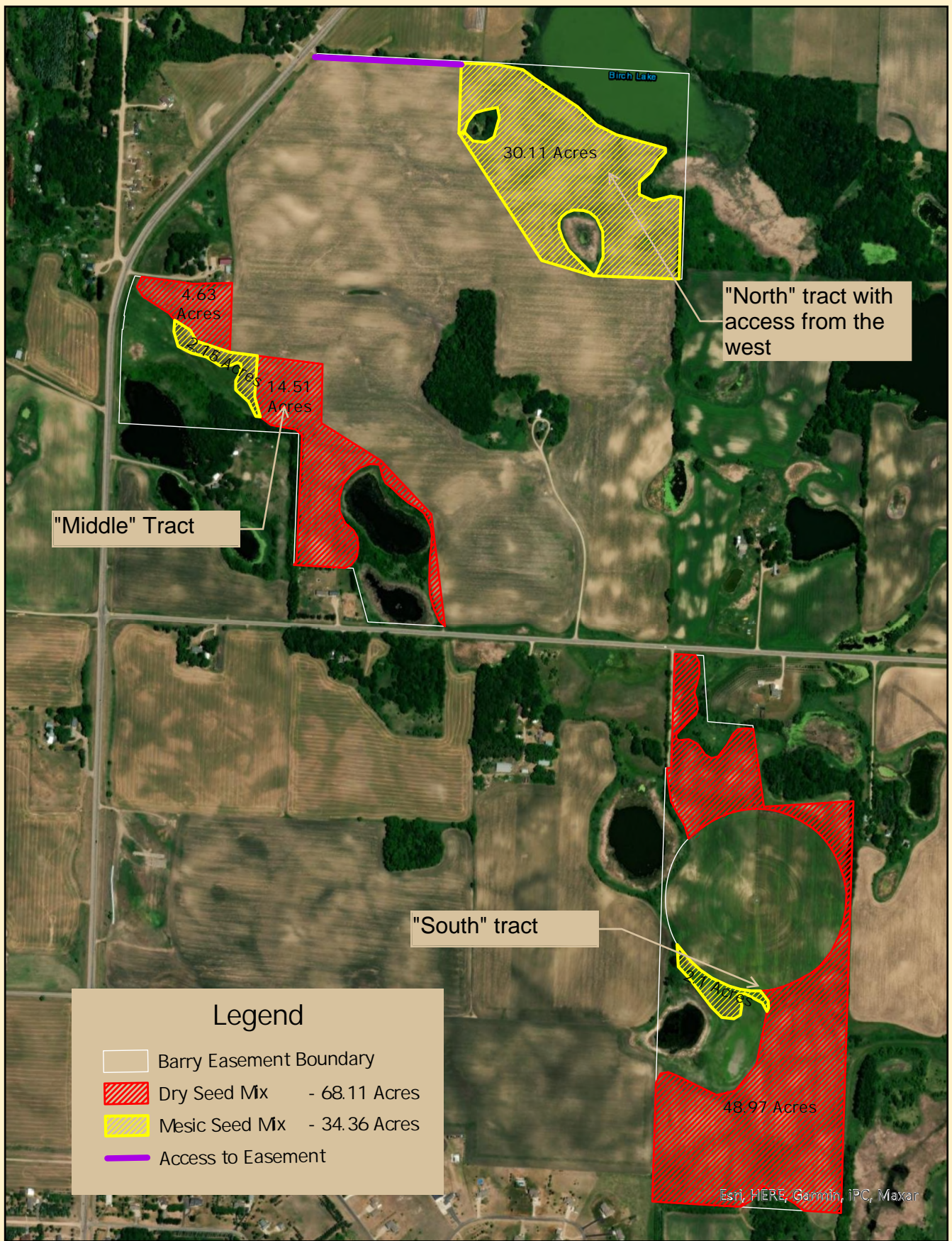
Itemized bid sheet is required (see **Exhibit D**). Please ensure total equals the same amount on page 1 of RFQ.

Seed origins must be provided and can be filled in on **Exhibit C** and returned with RFQ and itemized bid sheet.

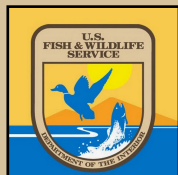
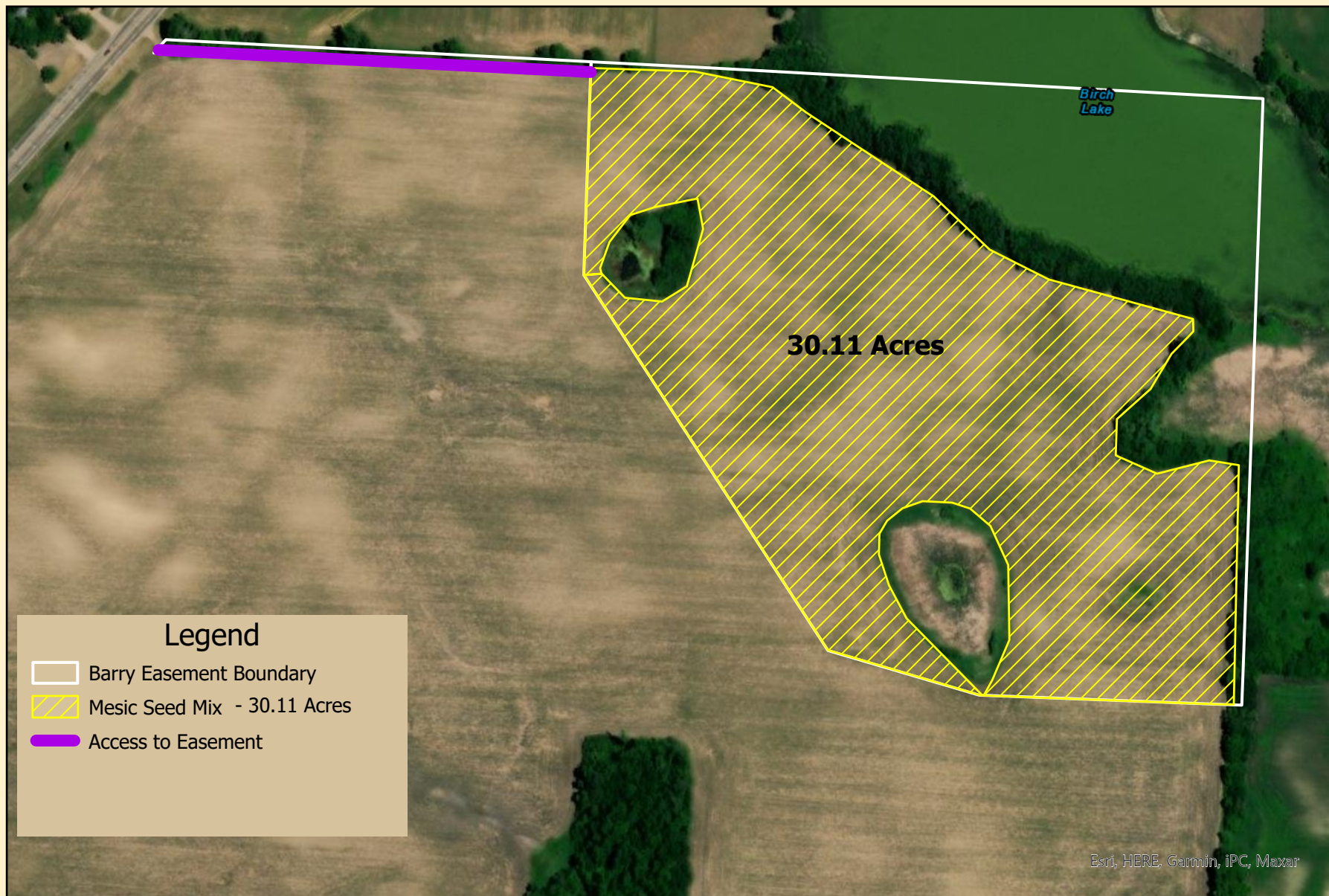
- Submit quotes via email **by COB Thursday, February 8, 2024, to Braden Pohl** at bpohl@mnland.org.



**Barry Grassland Easement
Overview Map**
Prairie Planting - 102.6 acres
T133N, R42W, Sections 17 & 20
Otter Tail County



**Barry Grassland Easement
Overview & Planting Map
Prairie Planting - 102.6 acres
T133N, R42W, Sections 17 & 20
Otter Tail County**

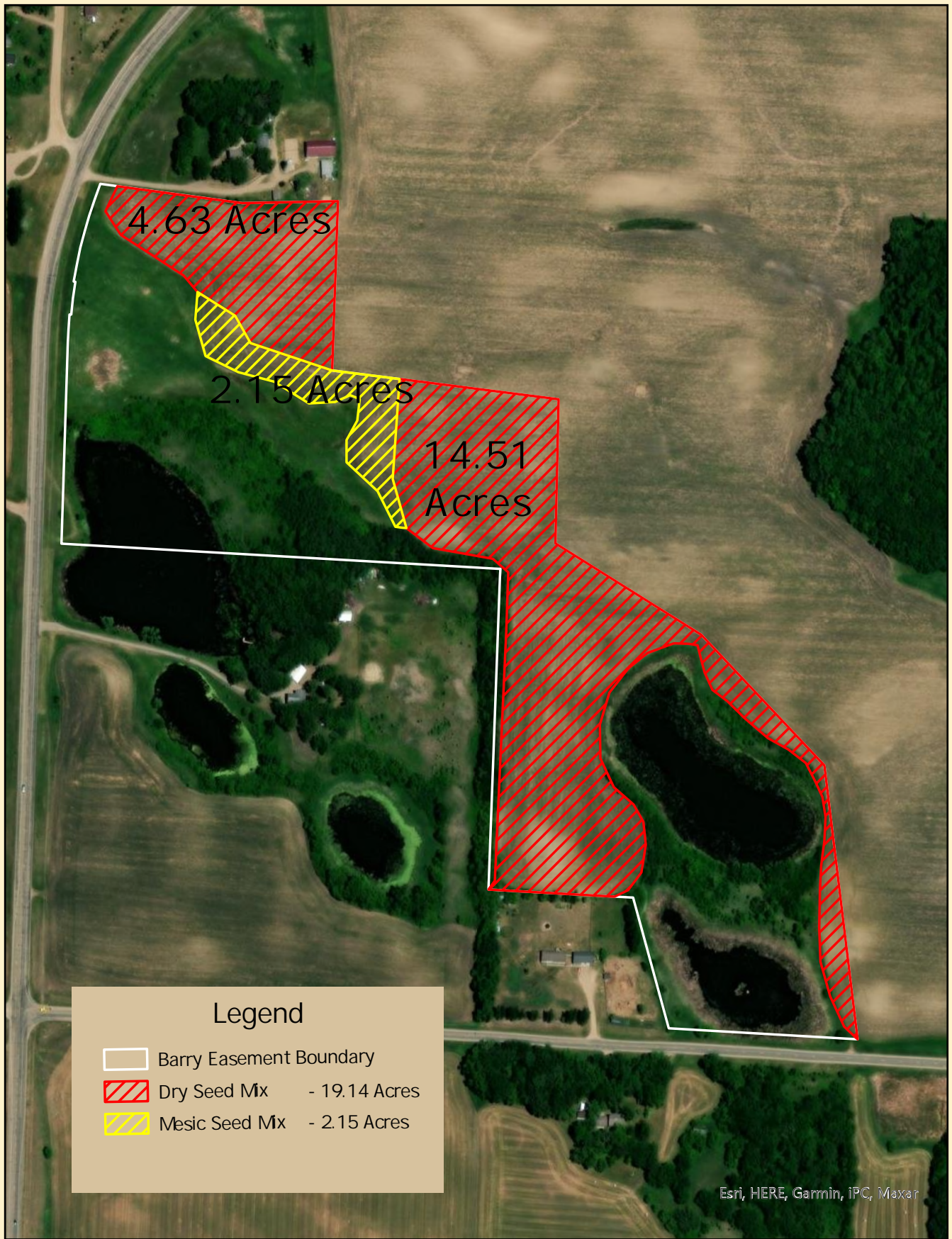


**Barry Grassland Easement
North Tract
Prairie Planting - 30.11 acres
T133N, R42W, Section 17
Otter Tail County**

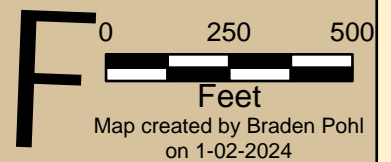


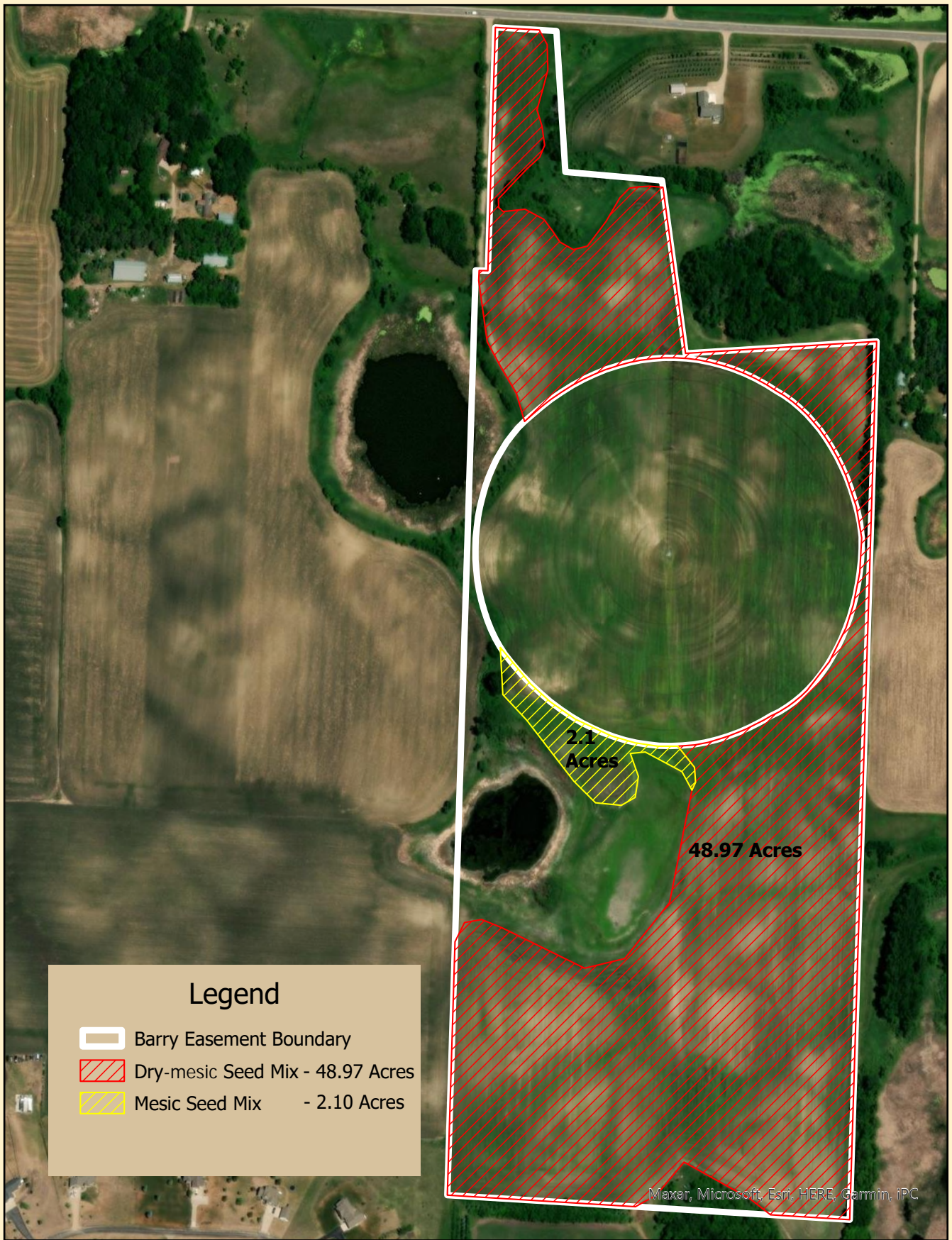
0 100 200 300 400 500
Feet

Map created by Braden Pohl 1-02-2024






**Barry Grassland Easement
"Middle" Tract
Prairie Planting - 21.29 acres
T133N, R42W, Sections 17 & 20
Otter Tail County**

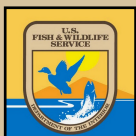




Legend

-  Barry Easement Boundary
-  Dry-mesic Seed Mix - 48.97 Acres
-  Mesic Seed Mix - 2.10 Acres

Maxar, Microsoft, Esri, HERE, Garmin, IPC

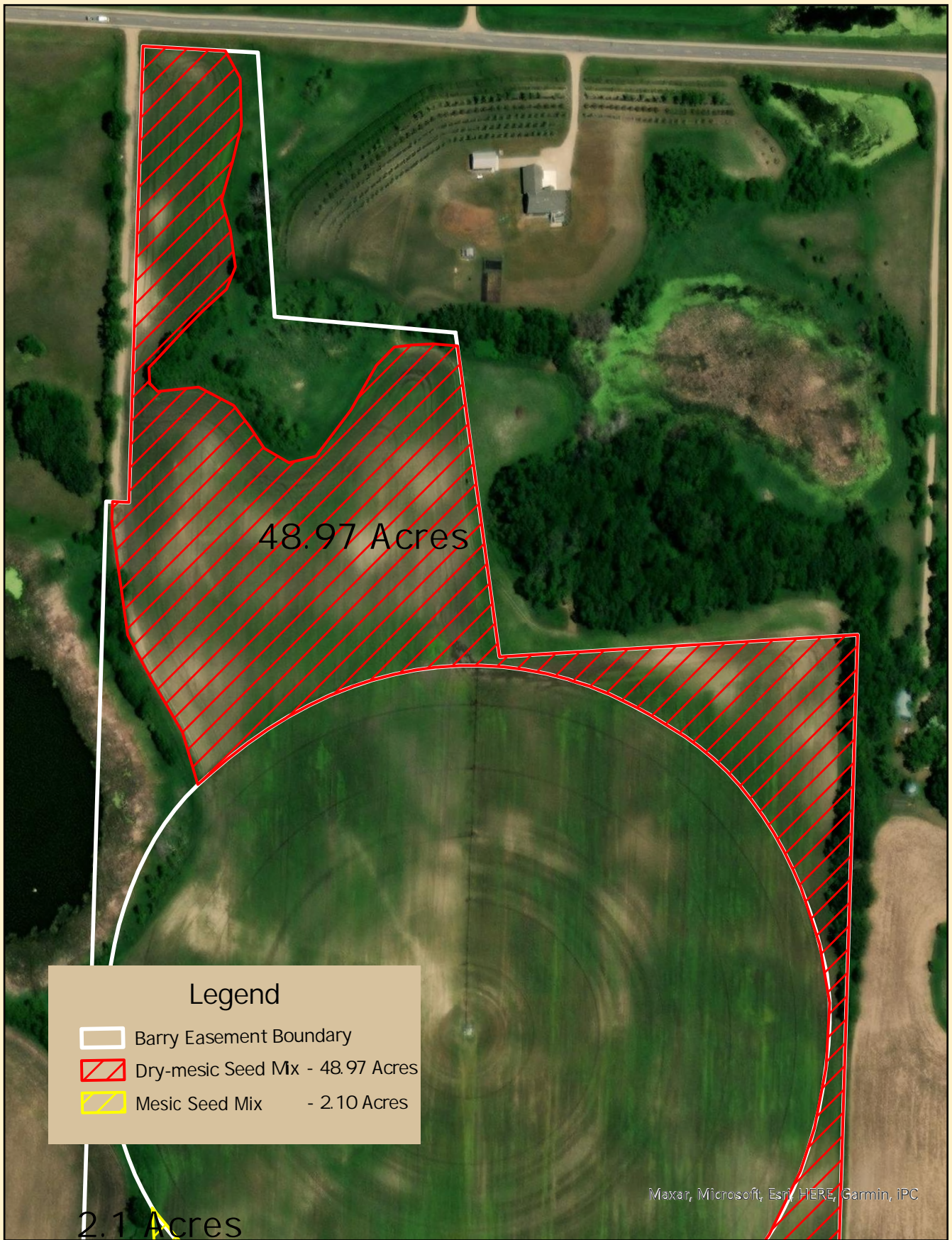


**Barry Grassland Easement
South Tract**
Prairie Planting - 51.07 acres
T128N, R40W, Section 32
Otter Tail County






0 250 500
Feet

Map created by Braden Pohl
on 1-02-2024



48.97 Acres

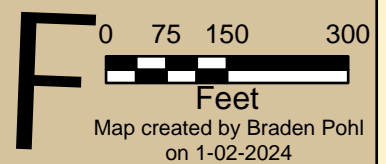
- Legend**
-  Barry Easement Boundary
 -  Dry-mesic Seed Mix - 48.97 Acres
 -  Mesic Seed Mix - 2.10 Acres

2.1 Acres




Maxar, Microsoft, Esri, HERE, Garmin, IPC



**Barry Grassland Easement
South Tract - Zoom-in 1
Prairie Planting - 51.07 acres
T133N, R42W, Section 20
Otter Tail County**



Legend

-  Barry Easement Boundary
-  Dry-mesic Seed Mx - 48.97 Acres
-  Mesic Seed Mx - 2.10 Acres

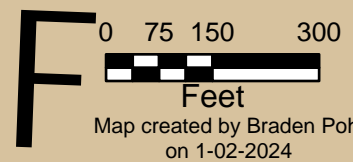
2.1
Acres

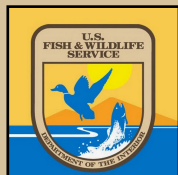
48.97 Acres

Maxar, Microsoft, Esri, HERE, Garmin, IPC

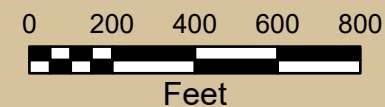


Barry Grassland Easement
South Tract - Zoom-in 2
Prairie Planting - 51.07 acres
T133N, R42W, Section 20
Otter Tail County

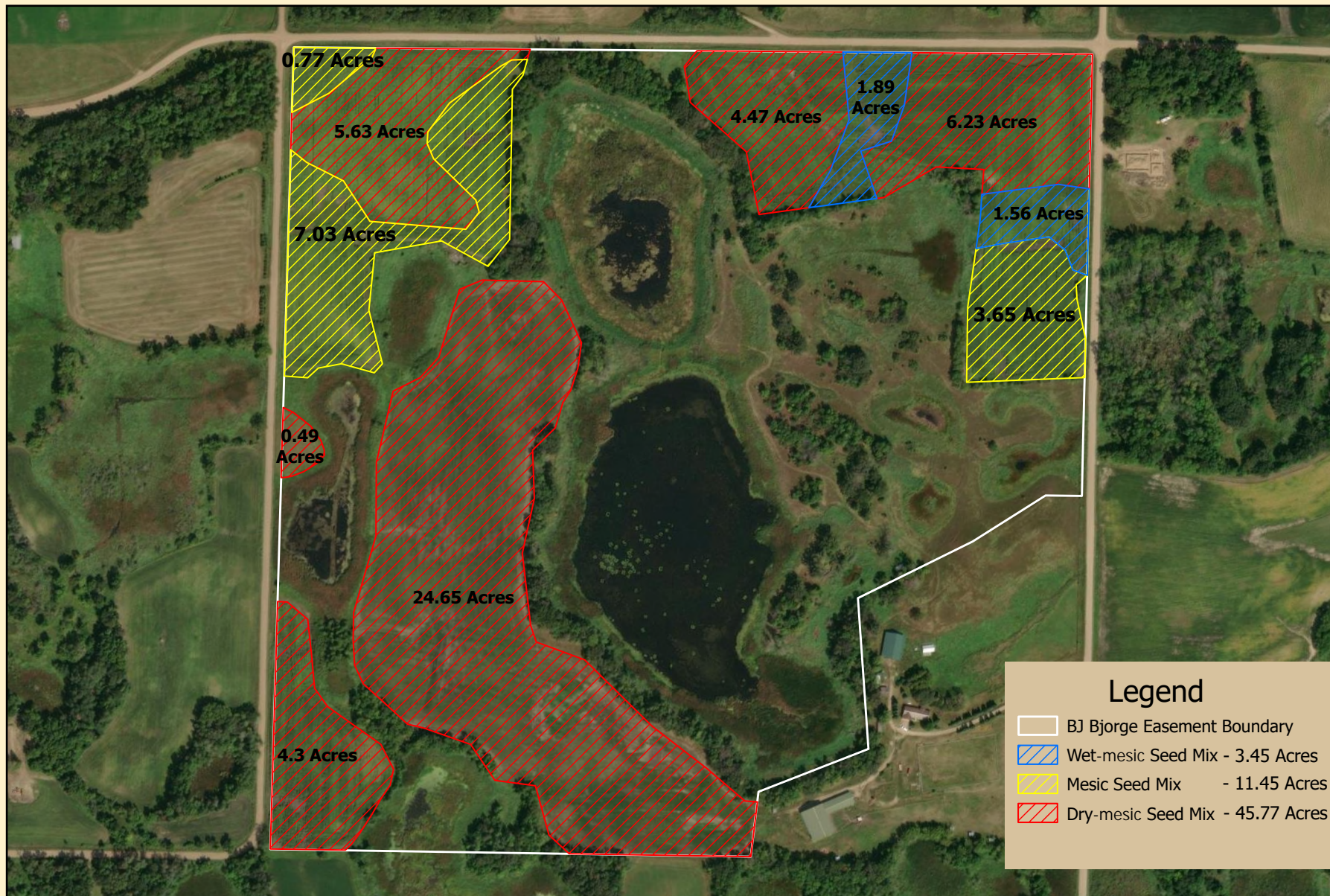




**BJ Bjorge Grassland Easement
Overview Map
Prairie Planting - 60.67 acres
Section 20, T131N, R38W
Otter Tail County**



Map created by Braden Pohl 12-29-2023



**BJ Bjorge Grassland Easement
Prairie Planting - 60.67 acres
Section 20
T131N, R38W
Otter Tail County**

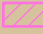




0 200 400 600 800
Feet

Map created by Braden Pohl 12-29-2023



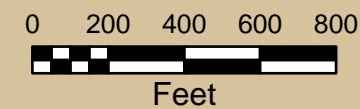
Legend

-  Prairie Planting
-  Dead Lake Easement Boundary
-  Roberts Trust Easement Boundary

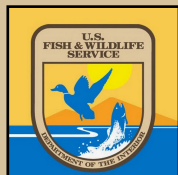


**Dead Lake Grassland Easement
Overview Map
Prairie Planting - 42.39 Acres
Section 35, T135N, R40W
Otter Tail County**

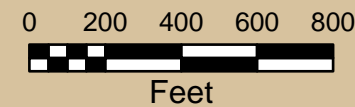
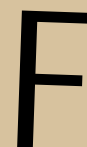
F



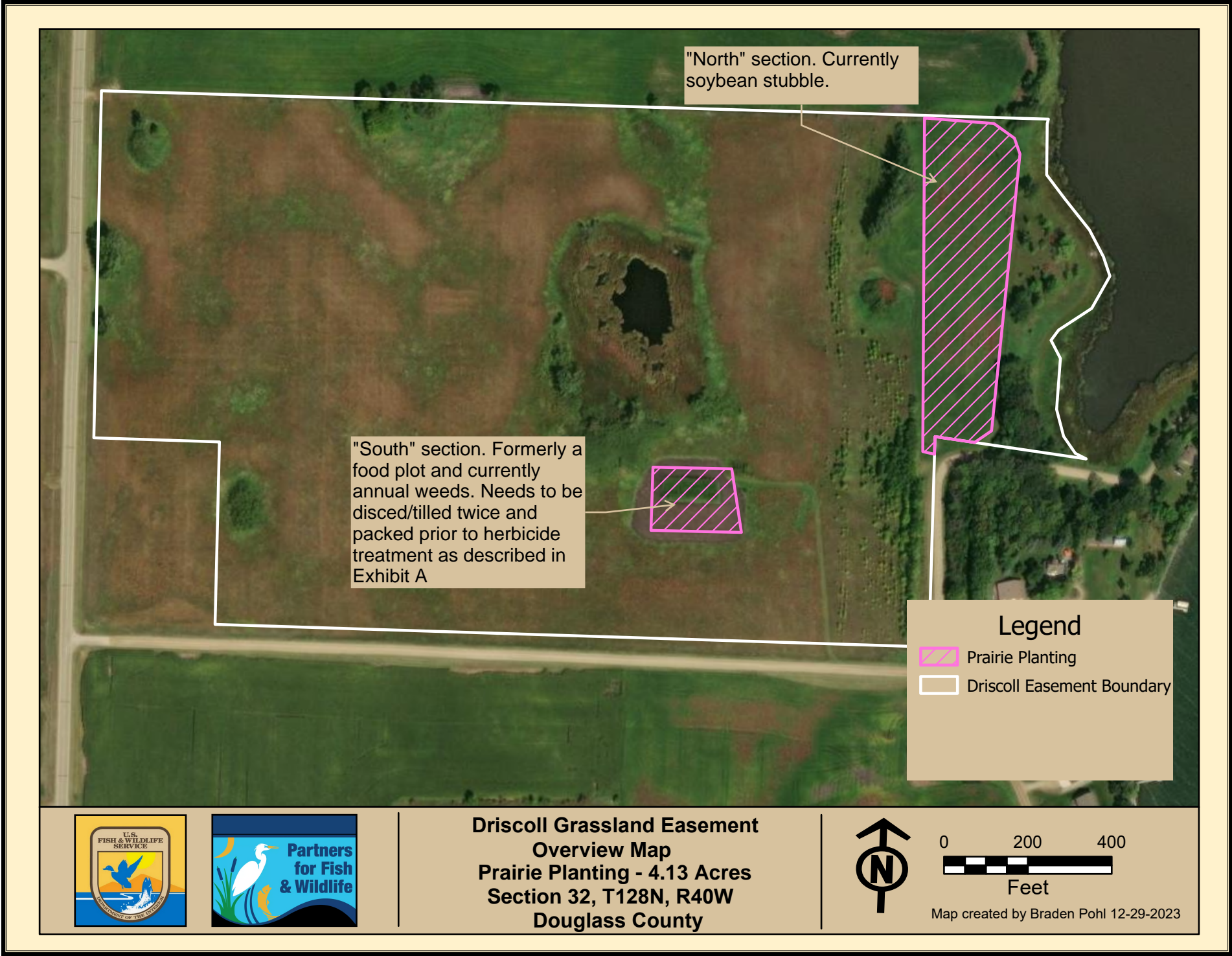
Map created by Braden Pohl 12-29-2023

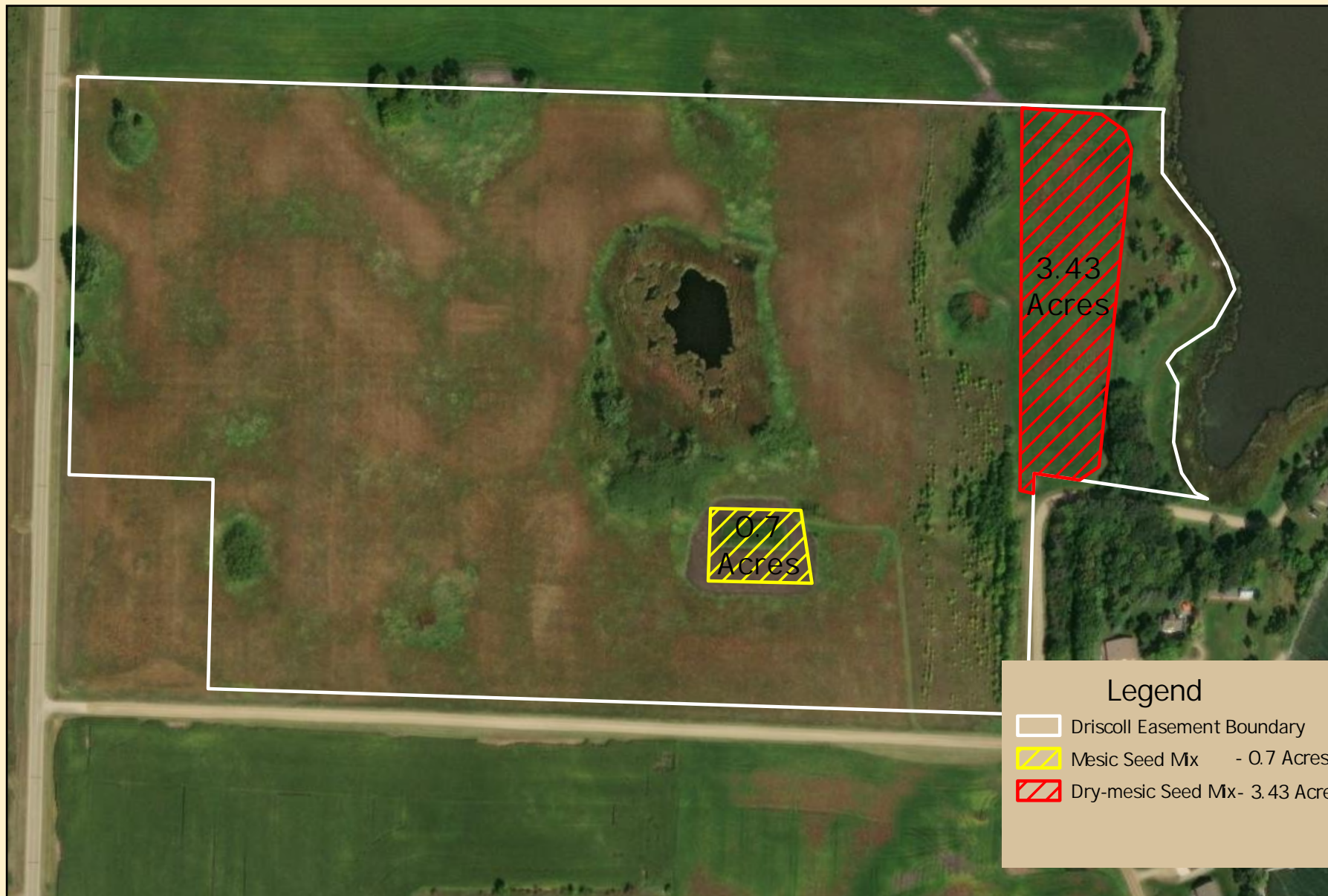


**Dead Lake Grassland Easement
Prairie Planting - 42.39 acres
Section 35
T135N, R40W
Otter Tail County**



Map created by Braden Pohl 12-29-2023





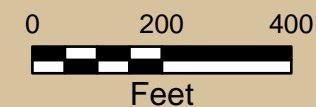
Legend

- Driscoll Easement Boundary
- Mesic Seed Mx - 0.7 Acres
- Dry-mesic Seed Mx - 3.43 Acres

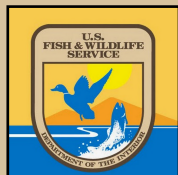


**Driscoll Grassland Easement
Prairie Planting - 4.13 acres
Section 32
T128N, R40W
Douglass County**

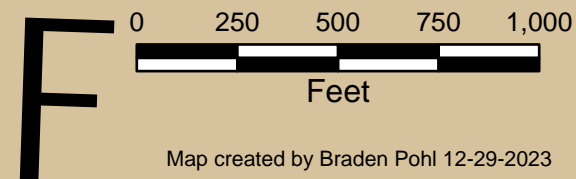
F

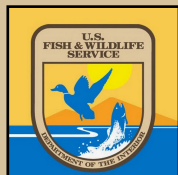


Map created by Braden Pohl 12-29-2023

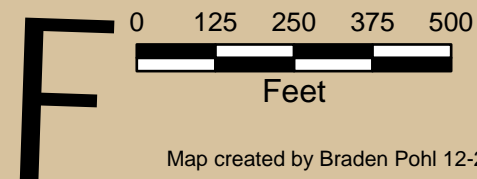


**Flooded Farm Grassland Easement
Overview Map
Prairie Planting - 4.11 acres
Sections 13, T131N, R40W
Otter tail County**

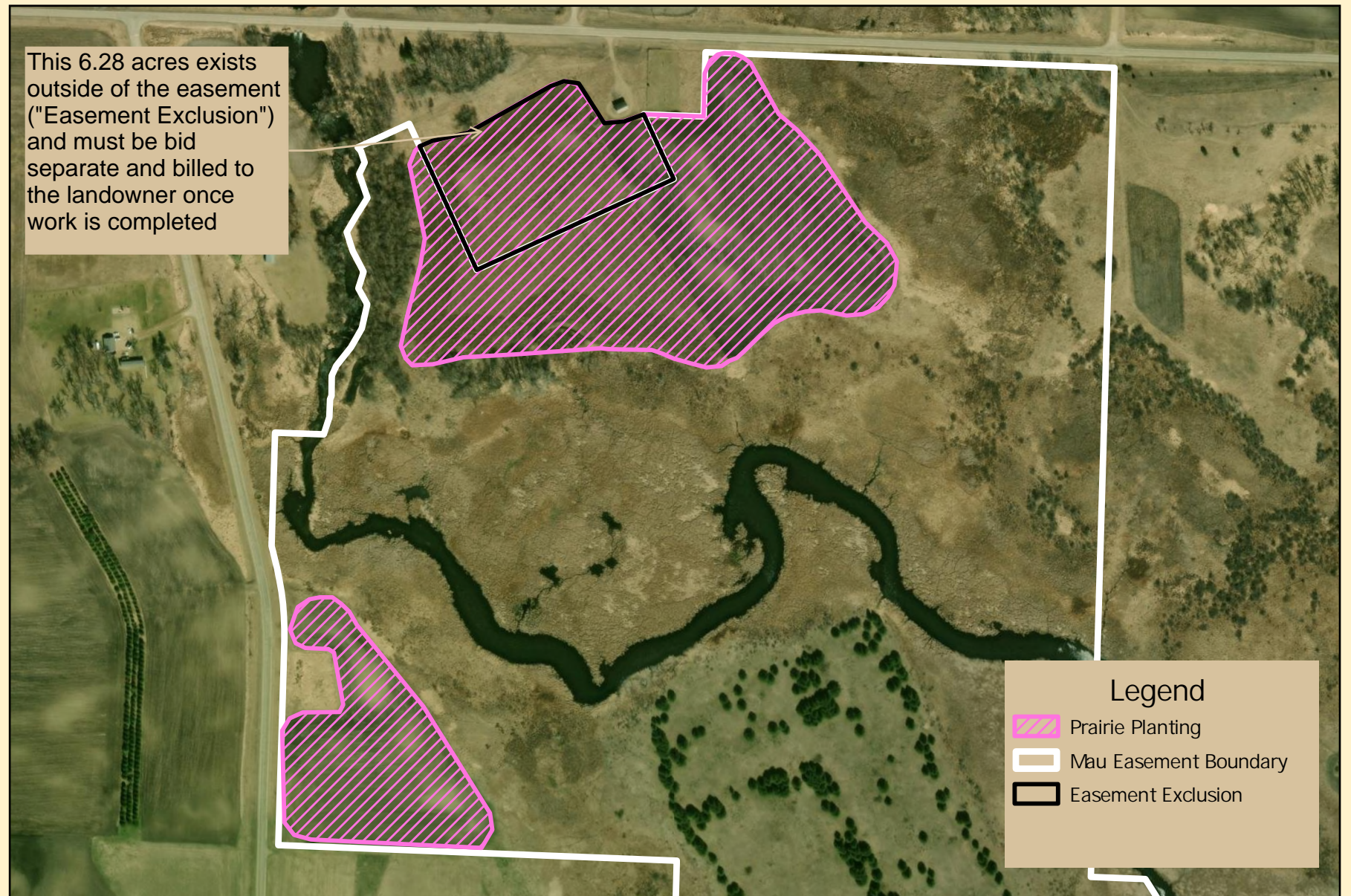







**Flooded Farm Grassland Easement
Overview Map
Prairie Planting - 4.11 acres
Section 14, T131N, R40W
Otter tail County**

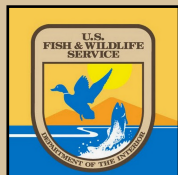


This 6.28 acres exists outside of the easement ("Easement Exclusion") and must be bid separate and billed to the landowner once work is completed

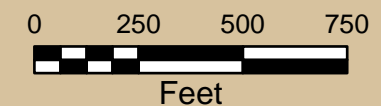


Legend

-  Prairie Planting
-  Mau Easement Boundary
-  Easement Exclusion

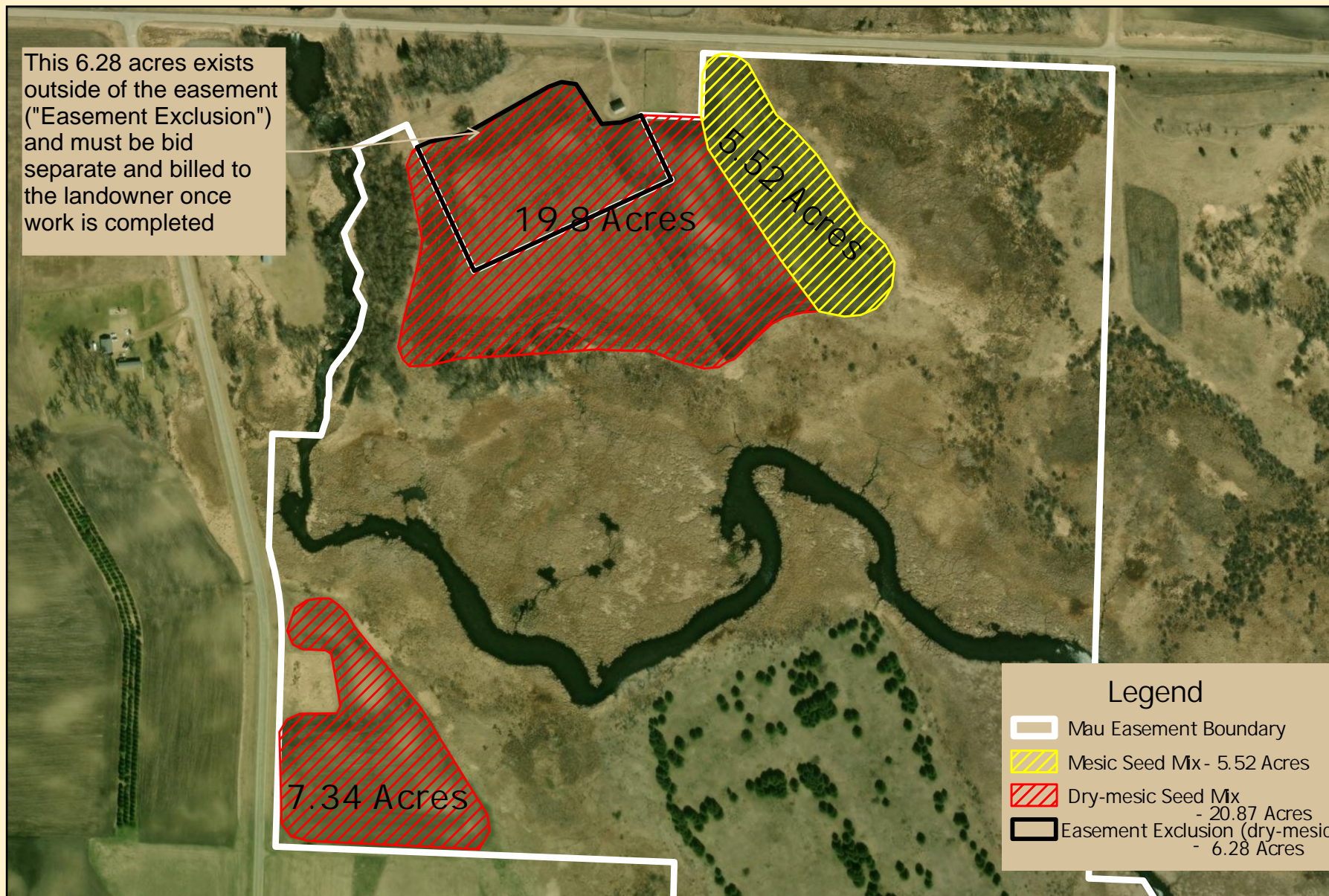


**Mau Grassland Easement
Prairie Planting - 32.66 acres
Section 24
T130N, R42W
Grant County**



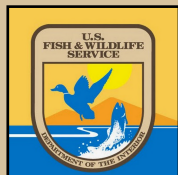
Map created by Braden Pohl 12-29-2023

This 6.28 acres exists outside of the easement ("Easement Exclusion") and must be bid separate and billed to the landowner once work is completed

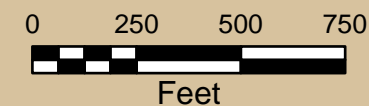
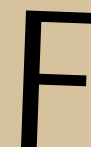


Legend

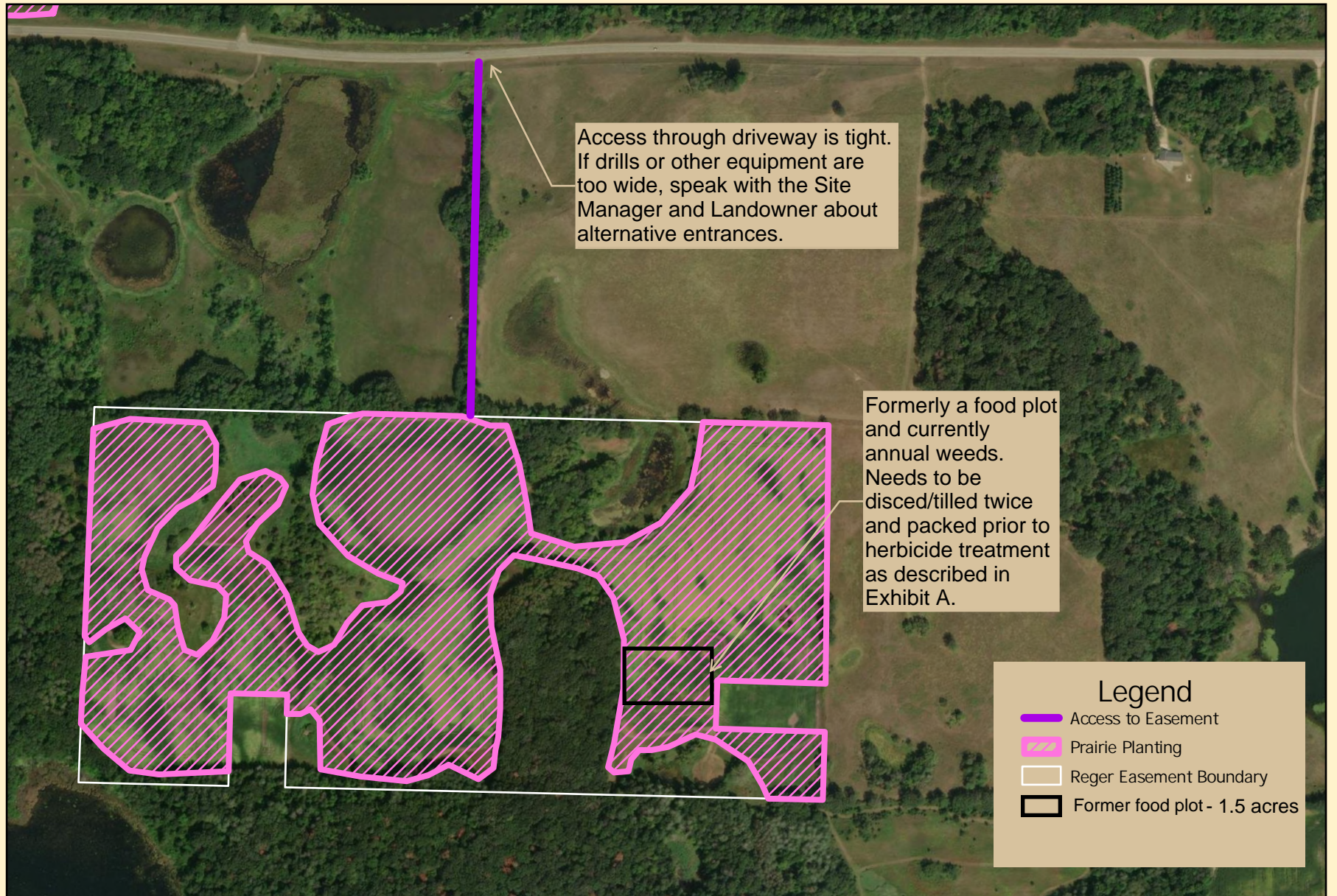
- Mau Easement Boundary
- Mesic Seed Mix - 5.52 Acres
- Dry-mesic Seed Mix - 20.87 Acres
- Easement Exclusion (dry-mesic) - 6.28 Acres



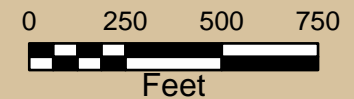
Mau Grassland Easement
Prairie Planting - 32.66 acres
Section 24
T130N, R42W
Grant County



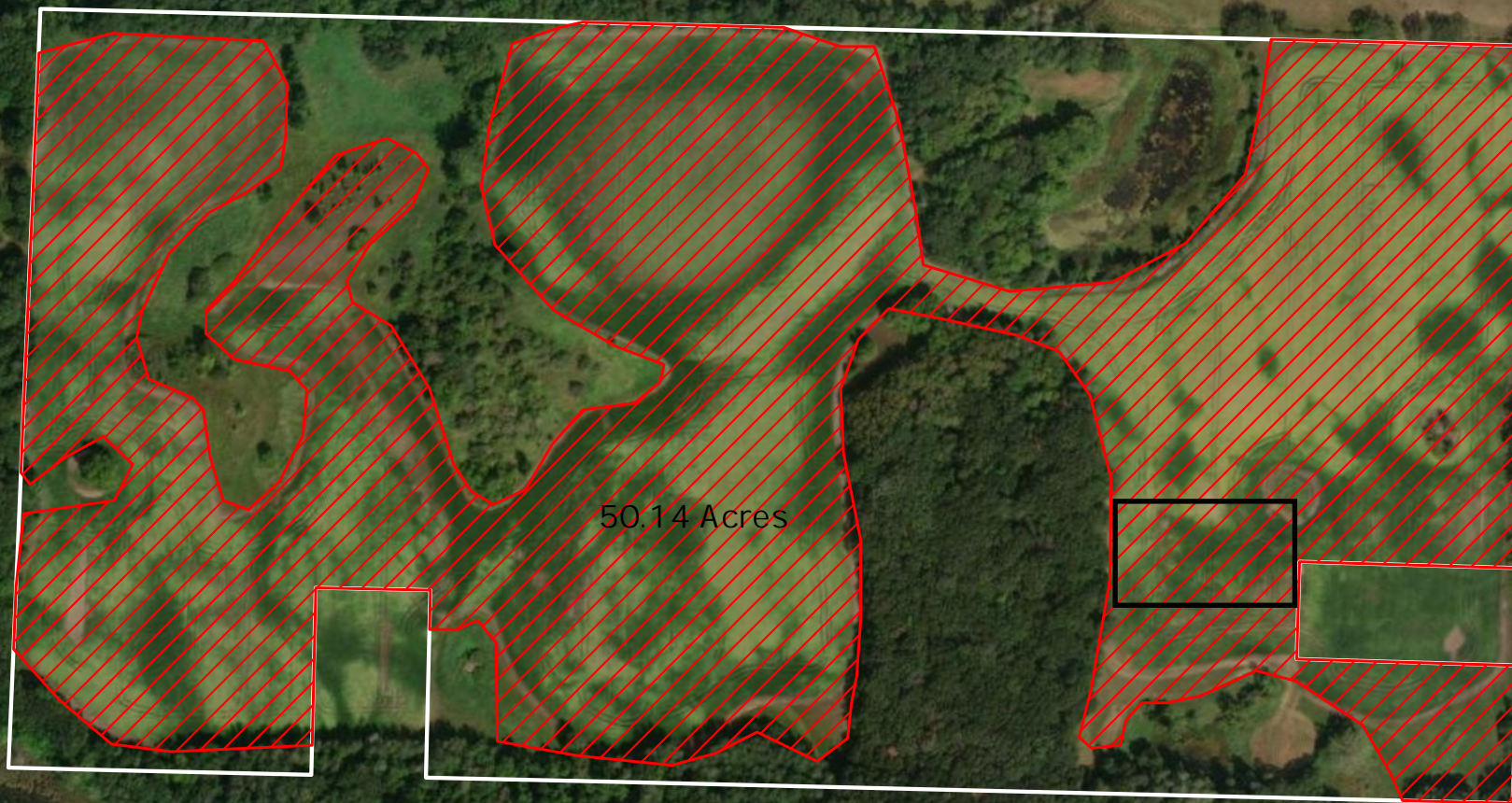
Map created by Braden Pohl 12-29-2023



**Reger Grassland Easement
Overview and Access Map
Prairie Planting - 50.14 acres
Section 15, T131N, R39W
Otter Tail County**






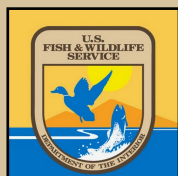
Map created by Braden Pohl 12-29-2023



50.14 Acres

Legend

-  Reger Easement Boundary
-  Dry-mesic Seed Mix
-  Former food plot - 1.5 acres

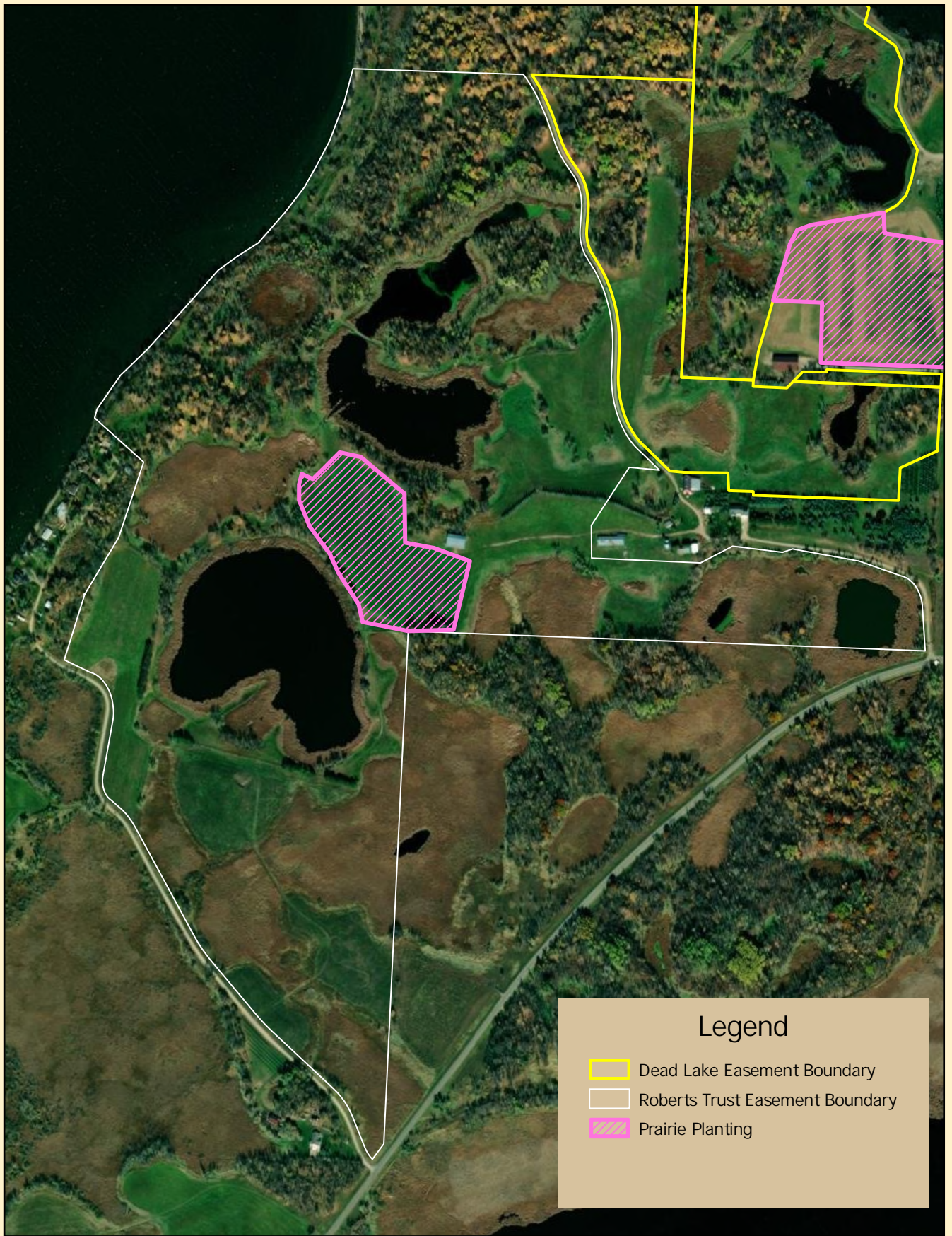


**Reger Grassland Easement
Prairie Planting - 50.14 acres
Section 15
T131N, R39W
Otter Tail County**

F

0 100 200 300 400 500
Feet

Map created by Braden Pohl 12-29-2023



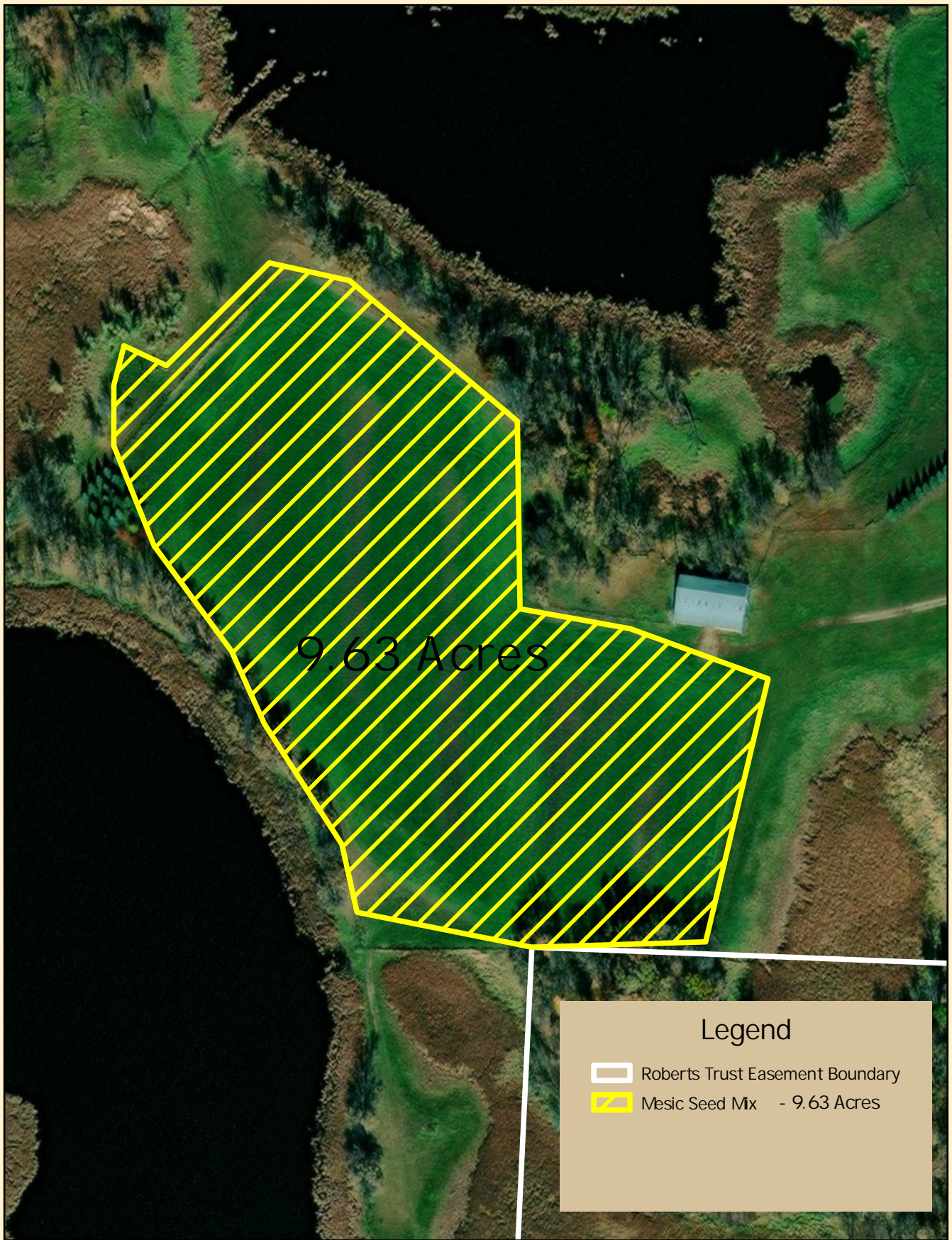
Legend

- Dead Lake Easement Boundary
- Roberts Trust Easement Boundary
- Prairie Planting





**Roberts Trust Easement
Overview Map
Prairie Planting - 9.63 Acres
Section 31, T135N, R40W
Otter Tail County**

F 0 150300 600
 Feet
Map created by Braden Pohl
on 12-29-2023

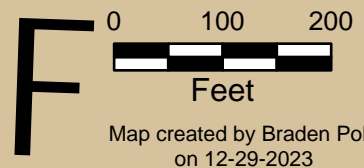


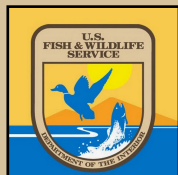
Legend

-  Roberts Trust Easement Boundary
-  Mesic Seed Mix - 9.63 Acres

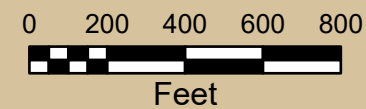


**Roberts Trust Easement
Prairie Planting - 9.63 Acres
Section 31
T135N, R40W
Otter Tail County**

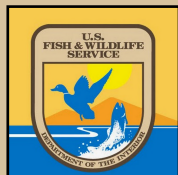




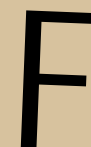
**Truestedt Grassland Easement
Overview Map
Prairie Planting - 61.86 acres
Section 19, T136N, R43W
Otter Tail County**



Map created by Braden Pohl 12-29-2023

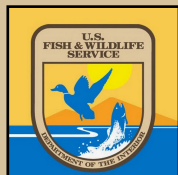
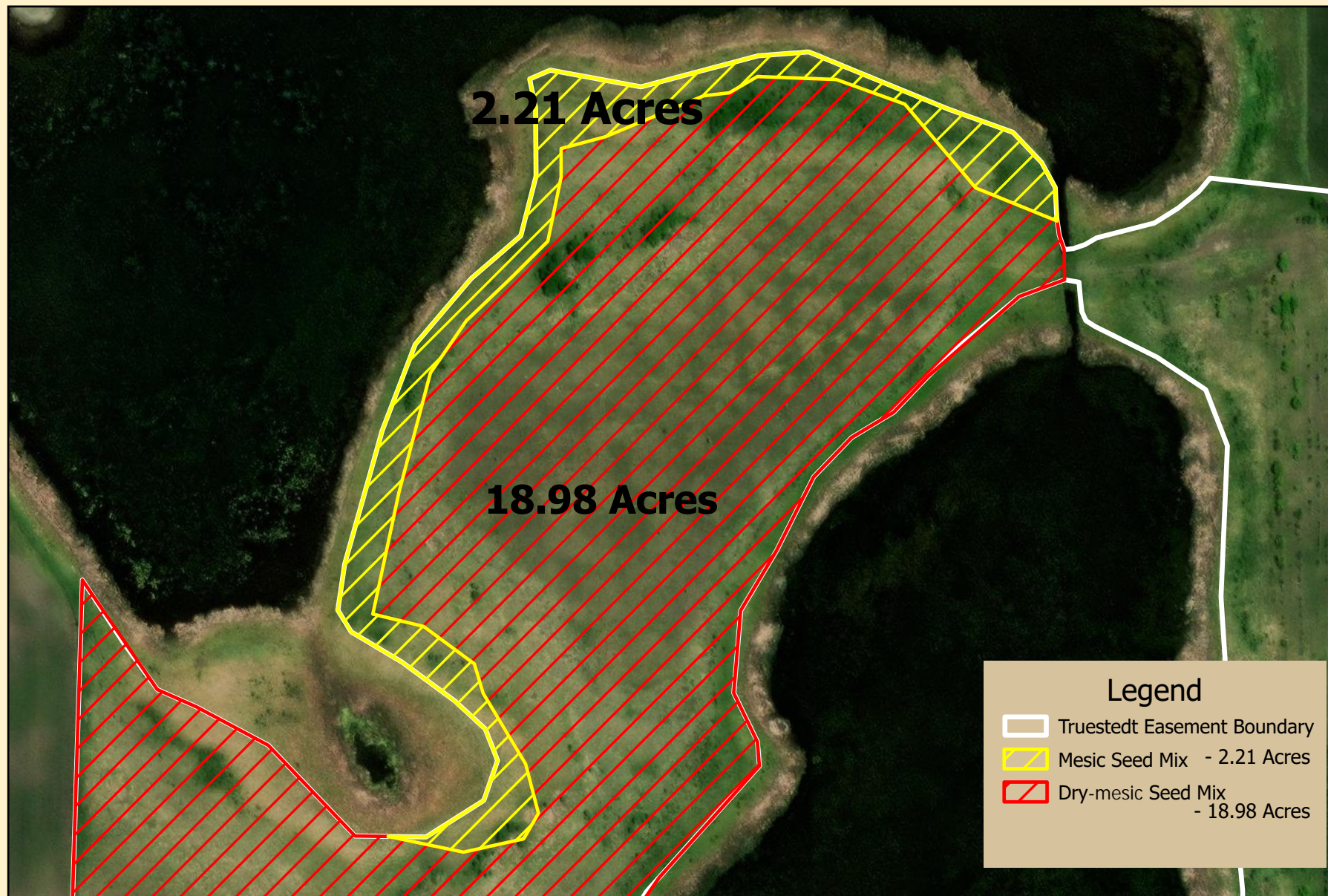


Truestedt Grassland Easement
Prairie Planting - 61.86 acres
Section 19
T136N, R43W
Otter Tail County



0 200 400 600 800
Feet

Map created by Braden Pohl 12-29-2023



Truestedt Grassland Easement
Zoom-in Map
Prairie Planting - 21.1 acres
Section 19, T136N, R43W
Otter Tail County



0 200
Feet

Map created by Braden Pohl 12-29-2023

FWS 2024 Prairie Restorations - Dry-mesic Mix

This mix is for the following projects: Truestedt, Driscoll, BJ Bjorge, Reger, Dead Lake, Barry, Mau, and Flooded Farm.



Date to plant: Spring 2024
Acres: 224.28
Planting Location: Otter Tail, Douglass, and Grant Counties
Seed Origin: 200 mile radius of Ashby, MN

Species list compiled by Braden Pohl
 U.S. Fish and Wildlife Service

GRASSES	lbs/acre	seeds/oz	total lbs needed	seeds/sqft	% pop	price/lb	Total Price	Genetic Origin
Andropogon gerardi (Big bluestem)	0.20	10000	44.86	0.73	1.23		\$0.00	
Bouteloua curtipendula (Side oats grama)	0.75	8000	168.21	2.20	3.69		\$0.00	
Bouteloua gracilis (Blue grama)	0.20	40000	44.86	2.94	4.93		\$0.00	
Bromus kalmii (Kalm's brome)	0.25	6000	56.07	0.55	0.92		\$0.00	
Elymus canadensis (Canada wildrye)	0.50	7100	112.14	1.30	2.19		\$0.00	
Elymus trachycaulum (Slender wheatgrass)	0.50	6900	112.14	1.27	2.12		\$0.00	
Koeleria cristata (Junegrass)	0.20	150000	44.86	11.02	18.47		\$0.00	
Muhlenbergia cuspidata (Plains Muhly)	0.02	180000	4.49	1.32	2.22		\$0.00	
Panicum oligosanthos (Scribner's panic grass)	0.20	9000	44.86	0.66	1.11		\$0.00	
Panicum virgatum (Switchgrass)	0.20	18000	44.86	1.32	2.22		\$0.00	
Pascopyrum smithii (Western Wheatgrass)	0.25	7081	56.07	0.65	1.09		\$0.00	
Schizachyrium scoparium (Little bluestem)	0.75	16000	168.21	4.41	7.39		\$0.00	
Sorghastrum nutans (Indian grass)	0.20	11000	44.86	0.81	1.35		\$0.00	
Sporobolus heterolepis (Prairie dropseed)	0.50	14000	112.14	2.57	4.31		\$0.00	
Total Grasses	4.72		1058.60	31.76	53.24		\$0.00	

FORBS	oz/acre	seeds/oz	total oz needed	seeds/sqft	% pop	price/oz	Total Price	Genetic Origin
1 ounce = approx. 30 grams								
Agastache foeniculum (Anise hyssop)	0.50	90000	112.14	1.03	1.73		\$0.00	
Allium stellatum (Prairie Onion)	0.25	11000	56.07	0.06	0.11		\$0.00	
Amorpha canescens (Leadplant)	3.00	17000	672.84	1.17	1.96		\$0.00	
Anenome cylindrica (Thimbleweed)	0.25	26000	56.07	0.15	0.25		\$0.00	
Asclepia incarnata (Swamp milkweed)	1.00	4800	224.28	0.11	0.18		\$0.00	
Asclepias syriaca (Common milkweed)	5.00	4000	1121.40	0.46	0.77		\$0.00	
Asclepias verticillata (Whorled milkweed)	2.00	11000	448.56	0.51	0.85		\$0.00	
Aster azureus (Sky blue aster)	0.50	80000	112.14	0.92	1.54		\$0.00	
Aster ericoides (Heath aster)	0.15	200000	33.64	0.69	1.15		\$0.00	
Aster laevis (Smooth blue aster)	0.50	55000	112.14	0.63	1.06		\$0.00	
Aster nova-angliae (New England aster)	0.50	66000	112.14	0.76	1.27		\$0.00	
Aster oblongifolius (Aromatic aster)	0.25	51000	56.07	0.29	0.49		\$0.00	
Aster sericeus (Silky aster)	0.35	56000	78.50	0.45	0.75		\$0.00	
Astragalus canadensis (Canadian milkvetch)	1.00	17000	224.28	0.39	0.65		\$0.00	
Carex brevor	0.60	29000	134.57	0.40	0.67		\$0.00	
Ceanothus americanus (new jersey tea)	0.40	7600	89.71	0.07	0.12		\$0.00	
Coreopsis palmata (Prairie coreopsis)	1.00	10000	224.28	0.23	0.38		\$0.00	
Dalea candida (White prairie clover)	3.00	15000	672.84	1.03	1.73		\$0.00	
Dalea purpurea (Purple prairie clover)	3.00	18000	672.84	1.24	2.08		\$0.00	
Desmodium canadensis (Canada tick-trefoil)	0.50	5500	112.14	0.06	0.11		\$0.00	

Echinacea angustifolia (N. leaf purple coneflower)	1.00	7000	224.28	0.16	0.27		\$0.00	
Gaillardia aristata (Blanketflower)	0.50	10000	112.14	0.11	0.19		\$0.00	
Helianthus maximilliani (Maximilian sunflower)	2.00	7500	448.56	0.34	0.58		\$0.00	
Helianthus pauciflorus (Showy sunflower)	0.50	4000	112.14	0.05	0.08		\$0.00	
Heliopsis helianthoides (Ox-eye sunflower)	4.00	6300	897.12	0.58	0.97		\$0.00	
Lespedeza capitata (RH bush clover)	2.00	8000	448.56	0.37	0.62		\$0.00	
Liatris aspera (Rough blazing star)	1.00	16000	224.28	0.37	0.62		\$0.00	
Liatris ligulistylis (Meadow Blazing Star)	1.00	10000	224.28	0.23	0.38		\$0.00	
Liatris punctata (Dotted blazing star)	0.70	7000	157.00	0.11	0.19		\$0.00	
Monarda fistulosa (Wild bergamot)	0.25	75000	56.07	0.43	0.72		\$0.00	
Oenothera biennis (Common evening primrose)	0.25	90000	56.07	0.52	0.87		\$0.00	
Penstemon gracilis (Slender Penstemon)	0.15	600000	33.64	2.07	3.46		\$0.00	
Penstemon grandiflorus (Showy penstemon)	1.00	14000	224.28	0.32	0.54		\$0.00	
Potentilla arguta (Prairie cinquefoil)	0.25	230000	56.07	1.32	2.21		\$0.00	
Pycnanthemum virginianum (Mountain mint)	0.15	220000	33.64	0.76	1.27		\$0.00	
Ratibida columnifera (Prairie coneflower)	1.00	20000	224.28	0.46	0.77		\$0.00	
Rosa blanda (Smooth wild rose)	0.25	3500	56.07	0.02	0.03			
Rudbeckia hirta (Black-eyed susan)	0.50	92000	112.14	1.06	1.77		\$0.00	
Solidago nemoralis (Old field goldenrod)	0.25	300000	56.07	1.72	2.89		\$0.00	
Solidago rigida (Stiff goldenrod)	1.00	41000	224.28	0.94	1.58		\$0.00	
Solidago speciosa (Showy goldenrod)	0.50	95000	112.14	1.09	1.83		\$0.00	
Tradescantia bracteata (Prairie Spiderwort)	2.50	10000	560.70	0.57	0.96		\$0.00	
Tradescantia occidentalis (Spiderwort)	2.75	8000	616.77	0.51	0.85		\$0.00	
Verbena stricta (Hoary vervain)	1.00	28000	224.28	0.64	1.08		\$0.00	
Veronicastrum virginicum (Culver's root)	0.05	800000	11.21	0.92	1.54		\$0.00	
Zizia aurea (Golden Alexander)	3.00	11000	672.84	0.76	1.27		\$0.00	
Zizia aptera (Heart-leaved golden alexander)	3.00	12000	672.84	0.83	1.39		\$0.00	
Total Forbs (oz)	54.30		12178.40	27.90	46.76		\$0.00	
<i>Total lbs needed: 761.15</i>								
Grand Total (Lbs)			1819.75	59.66	100.00		\$0.00	

Seed cost per acre: \$0.00

FWS 2024 Prairie Restorations - Mesic Mix

This mix is for the following projects: Truestedt, Driscoll, BJ Bjorge, Dead Lake, Roberts Trust, Barry, and Mau.



Date to plant: Spring 2024
Acres: 140.51
Planting Location: Otter Tail, Douglass, and Grant Counties
Seed Origin: 200 mile radius of Ashby, MN

Species list compiled by Braden Pohl
 U.S. Fish and Wildlife Service

GRASSES	lbs/acre	seeds/oz	total lbs needed	seeds/sqft	% pop	price/lb	Total Price	Genetic Origin
Andropogon gerardi (Big bluestem)	0.25	10000	35.13	0.92	1.82		\$0.00	
Bouteloua curtipendula (Side oats grama)	0.75	8000	105.38	2.20	4.36		\$0.00	
Bouteloua gracilis (Blue grama)	0.10	40000	14.05	1.47	2.91		\$0.00	
Bromus ciliatus (Fringed brome)	0.20	14750	28.10	1.08	2.14		\$0.00	
Bromus kalmii (Kalm's brome)	0.40	6000	56.20	0.88	1.74		\$0.00	
Elymus canadensis (Canada wildrye)	0.50	7100	70.26	1.30	2.58		\$0.00	
Elymus trachycaulum (Slender wheatgrass)	0.50	6900	70.26	1.27	2.51		\$0.00	
Elymus virginicus (Virginia wildrye)	0.25	6000	35.13	0.55	1.09		\$0.00	
Koeleria cristata (Junegrass)	0.10	150000	14.05	5.51	10.90		\$0.00	
Muhlenbergia cuspidata (Plains Muhly)	0.02	180000	2.81	1.32	2.62		\$0.00	
Muhlenbergia glomerata (Spiked Muhly)	0.02	225000	2.81	1.65	3.27		\$0.00	
Panicum oligosanthes (Scribner's panic grass)	0.15	9000	21.08	0.50	0.98		\$0.00	
Panicum virgatum (Switchgrass)	0.25	18000	35.13	1.65	3.27		\$0.00	
Schizachyrium scoparium (Little bluestem)	0.50	16000	70.26	2.94	5.81		\$0.00	
Sorghastrum nutans (Indian grass)	0.25	11000	35.13	1.01	2.00		\$0.00	
Sporobolus heterolepis (Prairie dropseed)	0.50	14000	70.26	2.57	5.09		\$0.00	
Total Grasses	4.74		666.02	26.83	53.09		\$0.00	

FORBS	oz/acre	seeds/oz	total oz needed	seeds/sqft	% pop	price/oz	Total Price	Genetic Origin
1 ounce = approx. 30 grams								
Agastache foeniculum (Anise hyssop)	0.50	90000	70.26	1.03	2.04		\$0.00	
Amorpha canescens (Leadplant)	2.00	17000	281.02	0.78	1.54		\$0.00	
Asclepia incarnata (Swamp milkweed)	2.00	4800	281.02	0.22	0.44		\$0.00	
Asclepias syriaca (Common milkweed)	3.00	4000	421.53	0.28	0.55		\$0.00	
Aster azureus (Sky blue aster)	0.25	80000	35.13	0.46	0.91		\$0.00	
Aster ericoides (Heath aster)	0.10	200000	14.05	0.46	0.91		\$0.00	
Aster laevis (Smooth blue aster)	0.80	55000	112.41	1.01	2.00		\$0.00	
Aster nova-angliae (New England aster)	0.50	66000	70.26	0.76	1.50		\$0.00	
Astragalus canadensis (Canadian milkvetch)	1.00	17000	140.51	0.39	0.77		\$0.00	
Carex brevoir	0.25	29000	35.13	0.17	0.33		\$0.00	
Carex molesta	0.20	25000	28.10	0.11	0.23		\$0.00	
Coreopsis palmata (Prairie coreopsis)	0.50	10000	70.26	0.11	0.23		\$0.00	
Dalea candida (White prairie clover)	3.00	15000	421.53	1.03	2.04		\$0.00	
Dalea purpurea (Purple prairie clover)	3.00	18000	421.53	1.24	2.45		\$0.00	

Desmodium canadensis (Canada tick-trefoil)	2.00	5500	281.02	0.25	0.50		\$0.00	
Echinacea angustifolia (N. leaf purple coneflower)	1.00	7000	140.51	0.16	0.32		\$0.00	
Helianthus maximilliani (Maximilian sunflower)	2.00	7500	281.02	0.34	0.68		\$0.00	
Helianthus pauciflorus (Showy sunflower)	0.50	4000	70.26	0.05	0.09		\$0.00	
Heliopsis helianthoides (Ox-eye sunflower)	4.00	6300	562.04	0.58	1.14		\$0.00	
Lespedeza capitata (RH bush clover)	2.00	8000	281.02	0.37	0.73		\$0.00	
Liatris aspera (Rough blazing star)	1.00	16000	140.51	0.37	0.73		\$0.00	
Liatris ligulistylis (Meadow Blazing Star)	0.65	10000	91.33	0.15	0.30		\$0.00	
Liatris pycnostachya (Prairie blazing star)	2.00	11000	281.02	0.51	1.00		\$0.00	
Monarda fistulosa (Wild bergamot)	0.25	75000	35.13	0.43	0.85		\$0.00	
Oenothera biennis (Common evening primrose)	0.25	90000	35.13	0.52	1.02		\$0.00	
Penstemon grandiflorus (Showy penstemon)	1.00	14000	140.51	0.32	0.64		\$0.00	
Potentilla arguta (Prairie cinquefoil)	0.20	230000	28.10	1.06	2.09		\$0.00	
Pycnanthemum virginianum (Mountain mint)	0.25	220000	35.13	1.26	2.50		\$0.00	
Ratibida columnifera (Prairie coneflower)	1.50	20000	210.77	0.69	1.36		\$0.00	
Rudbeckia hirta (Black-eyed susan)	0.50	92000	70.26	1.06	2.09		\$0.00	
Solidago rigida (Stiff goldenrod)	0.75	41000	105.38	0.71	1.40		\$0.00	
Solidago speciosa (Showy goldenrod)	0.25	95000	35.13	0.55	1.08		\$0.00	
Tradescantia bracteata (Prairie Spiderwort)	2.50	10000	351.28	0.57	1.14		\$0.00	
Tradescantia occidentalis (Spiderwort)	2.75	8000	386.40	0.51	1.00		\$0.00	
Verbena hastata (Blue vervain)	0.50	93000	70.26	1.07	2.11		\$0.00	
Verbena stricta (Hoary vervain)	1.00	28000	140.51	0.64	1.27		\$0.00	
Veronicastrum virginicum (Culver's root)	0.15	800000	21.08	2.75	5.45		\$0.00	
Zizia aurea (Golden Alexander)	3.00	11000	421.53	0.76	1.50		\$0.00	
Total Forbs(oz)	47.1		6618.02	23.71	46.91		\$0.00	
<i>Total lbs needed: 413.63</i>								
Grand Total			1079.64	50.54	100.00		\$0.00	

Seed cost per acre without collection: \$0.00

FWS 2024 Prairie Restorations - Wet-mesic Mix

This mix is for the following project: BJ Bjorge.

Date to plant: Spring 2024
Acres: 3.5
Planting Location: Otter Tail County
Seed Origin: 200 mile radius of Ashby, MN

Species list compiled by Braden Pohl
 U.S. Fish and Wildlife Service



GRASSES	lbs/acre	seeds/oz	total lbs needed	seeds/sqft	% pop	price/lb	Total Price	Genetic Origin
Andropogon gerardi (Big bluestem)	0.50	10000	1.75	1.84	4.13		\$0.00	
Calamagrostis canadensis (Bluejoint grass)	0.05	280000	0.18	5.14	11.58		\$0.00	
Bromus ciliatus (fringed brome)	0.50	5500	1.75	1.01	2.27		\$0.00	
Bromus kalmii (prairie brome)	0.50	8000	1.75	1.47	3.31			
Elymus canadensis (Canada wildrye)	0.50	5200	1.75	0.96	2.15		\$0.00	
Elymus virginicus (Virginia wildrye)	0.75	6000	2.63	1.65	3.72		\$0.00	
Panicum virgatum (Switchgrass)	0.20	18000	0.70	1.32	2.98		\$0.00	
Sorghastrum nutans (Indian grass)	0.50	12000	1.75	2.20	4.96		\$0.00	
Spartina pectinata (Prairie cord grass)	1.00	6600	3.50	2.42	5.46		\$0.00	
Sporobolus heterolepis (Prairie dropseed)	0.50	14000	1.75	2.57	5.79		\$0.00	
Total Grasses	5.00		17.50	20.59	46.35		\$0.00	

FORBS	oz/acre	seeds/oz	total oz needed	seeds/sqft	% pop	price/oz	Total Price	Genetic Origin
1 ounce = approx. 30 grams								
Anenome canadensis (Meadow anenome)	1.00	8000	3.50	0.18	0.41		\$0.00	
Asclepia incarnata (Swamp milkweed)	5.00	4800	17.50	0.55	1.24		\$0.00	
Asclepias syriaca (Common milkweed)	5.00	4000	17.50	0.46	1.03		\$0.00	
Aster ericoides (Heath aster)	0.15	200000	0.53	0.69	1.55		\$0.00	
Aster laevis (Smooth blue aster)	0.50	55000	1.75	0.63	1.42		\$0.00	
Aster nova-angliae (New England aster)	0.50	66000	1.75	0.76	1.71		\$0.00	
Carex stipata (awl-fruited sedge)	1.00	34000	3.50	0.78	1.76		\$0.00	
Eupatorium maculatum (Joe Pye weed)	0.50	85000	1.75	0.98	2.20		\$0.00	
Eupatorium perfoliatum (Boneset)	0.40	200000	1.40	1.84	4.13		\$0.00	
Euthamia graminifolia (Grass-leaved goldenrod)	0.10	350,000	0.35	0.80	1.81		\$0.00	
Heliopsis helianthoides (Ox-eye sunflower)	4.00	6300	14.00	0.58	1.30		\$0.00	
Liatris ligulistylis (Meadow Blazing Star)	3.00	10000	10.50	0.69	1.55		\$0.00	
Liatris pycnostachya (Prairie blazing star)	2.00	11000	7.00	0.51	1.14		\$0.00	
Monarda fistulosa (Wild bergamot)	0.25	75000	0.88	0.43	0.97		\$0.00	
Pycnanthemum virginianum (Mountain mint)	0.40	220000	1.40	2.02	4.55		\$0.00	
Symphyotrichum novae-angliae (New England Aster)	0.50	80000	1.75	0.92	2.07		\$0.00	
Scirpus cyperinus (Woolgrass)	0.05	1700000	0.18	1.95	4.39		\$0.00	
Scrophularia lanceolata (Lance-leaf Figwort)	0.60	220,000	2.10	3.03	6.82		\$0.00	
Solidago riddellii (Ridell's goldenrod)	0.50	80,000	1.75	0.92	2.07		\$0.00	
Thalictrum dasycarpum (tall meadow-rue)	1.50	8,500	5.25	0.29	0.66		\$0.00	
Verbena hastata (Blue vervain)	0.50	93000	1.75	1.07	2.40		\$0.00	
Veronicastrum virginicum (Culver's root)	0.15	800000	0.53	2.75	6.20		\$0.00	
Zizia aurea (Golden Alexander)	4.00	11000	14.00	1.01	2.27		\$0.00	

Total Forbs(oz)	31.60		110.60	23.83	53.65	\$0.00
		<i>Total lbs needed:</i>	6.91			
Grand Total			24.41	44.42	100.00	\$0.00
Seed cost per acre:	\$0.00					

Exhibit D –USFWS Prairie Restorations Itemized Bid

Project Name: USFWS FFWMD Prairie Restorations 2024- 374.16 acres

Due: 11:59 PM February 8, 2024

Contractor Name:	Email:	Cell No:
Address:	City/State/Zip Code:	Contractor Signature:

Item	Unit	Unit Price	Estimated Quantity	Total Price
<i>Seed Purchase</i>				
Dry-mesic Mix per Exhibit C: Mau exclusion (6.28 acres)	Acre		6.28	
Dry-mesic Mix per Exhibit C: Remainder (218 acres)	Acre		218	
Mesic Mix per Exhibit C	Acre		140.51	
Wet-mesic Mix per Exhibit C	Acre		3.5	
<i>Truestedt – 61.86 acres</i>				
Pre-seeding herbicide application	Acre		61.77	
Drill Seeding	Acre		61.77	
First Mowing	L.S.		1	
Second Mowing	L.S.		1	
<i>Driscoll – 4.13 acres</i>				
2x Discing/Tilling and Packing of South Section (see Driscoll Overview Map)	Acre		0.7	
Pre-seeding herbicide application	Acre		4.13	
Drill Seeding	Acre		4.13	
First Mowing	L.S.		1	
Second Mowing	L.S.		1	
<i>BJ Bjorge – 60.67 acres</i>				
Pre-seeding herbicide application	Acre		60.67	
Drill Seeding	Acre		60.67	
First Mowing	L.S.		1	

Second Mowing	L.S.		1	
<i>Reger – 50.14 acres</i>				
2x Discing/Tilling and Packing of former food plot (see Reger Overview Map)	Acre		1.5	
Pre-seeding herbicide application	Acre		50.14	
Drill Seeding	Acre		50.14	
First Mowing	L.S.		1	
Second Mowing	L.S.		1	
<i>Dead Lake – 42.39 acres</i>				
Pre-seeding herbicide application	Acre		42.39	
Drill Seeding	Acre		42.39	
First Mowing	L.S.		1	
Second Mowing	L.S.		1	
<i>Roberts Trust – 9.63 acres</i>				
Pre-seeding herbicide application	Acre		9.63	
Drill Seeding	Acre		9.63	
First Mowing	L.S.		1	
Second Mowing	L.S.		1	
<i>Barry – 102.60 acres</i>				
Pre-seeding herbicide application	Acre		108.57	
Drill Seeding	Acre		108.57	
First Mowing	L.S.		1	
Second Mowing	L.S.		1	
<i>Mau exclusion– 6.28 acres</i>				
Pre-seeding herbicide application	Acre		6.28	
Drill Seeding	Acre		6.28	
First Mowing	L.S.		1	
Second Mowing	L.S.		1	
<i>Mau remainder – 26.38 acres</i>				
Pre-seeding herbicide application	Acre		26.38	

Drill Seeding	Acre		26.38	
First Mowing	L.S.		1	
Second Mowing	L.S.		1	
<i>Flooded Farm – 4.11 acres</i>				
2x Discing/Tilling and Packing	L.S.		1	
Pre-seeding herbicide application	Acre		4.11	
Drill Seeding	Acre		4.11	
First Mowing	L.S.		1	
Second Mowing	L.S.		1	
Project Total				